

INSTALLATION MANUAL

PRODUCT: **SIDE STEP BARS**
MODEL: **FORD RANGER (2011-)**
PART NO: **2D.1806.1**



CAUTION!

To reduce the risk of serious injury or damage, please read and understand all instructions and procedures before attempting to install or use this product.
Safety glasses must be worn at all times during installation or maintenance of this product.
Ensure all mounting bolts are tensioned after 1000 kms and periodically there after.

SIDE STEP BARS

Part Number: 2D.1806.1
Suited to vehicle: Ford Ranger (double cab)
2011-2015; 2015-



Material: Steel bar 63,5x1,5 mm
Dimensions: 2026x339x69 mm
Weight: 40 kg steps
64 kg fittings

SAFETY NOTICE

- * The RIVAL side step bars are designed to compliment the use and design of the specified vehicle under conditions specified by the car manufacturer.
- * While driving the vehicle at any speed, collision with any other vehicle, animal or object must always be avoided.
- * The operation of a vehicle where the steps are not properly attached and fastened to the vehicle, or where they have been damaged, must be avoided at all cost.
- * It is recommended that you carry out regular inspections of all the side steps fittings.

INSTALLATION NOTICE

- * The RIVAL side step bars must be mounted and affixed to the vehicle according to the installation manual provided by an authorized RIVAL dealer or Motor dealer or by a special vehicle repairer or fitment center.
- * Personal safety during the installation process must be adhered to at all times and the use of personal safety equipment is highly recommended.

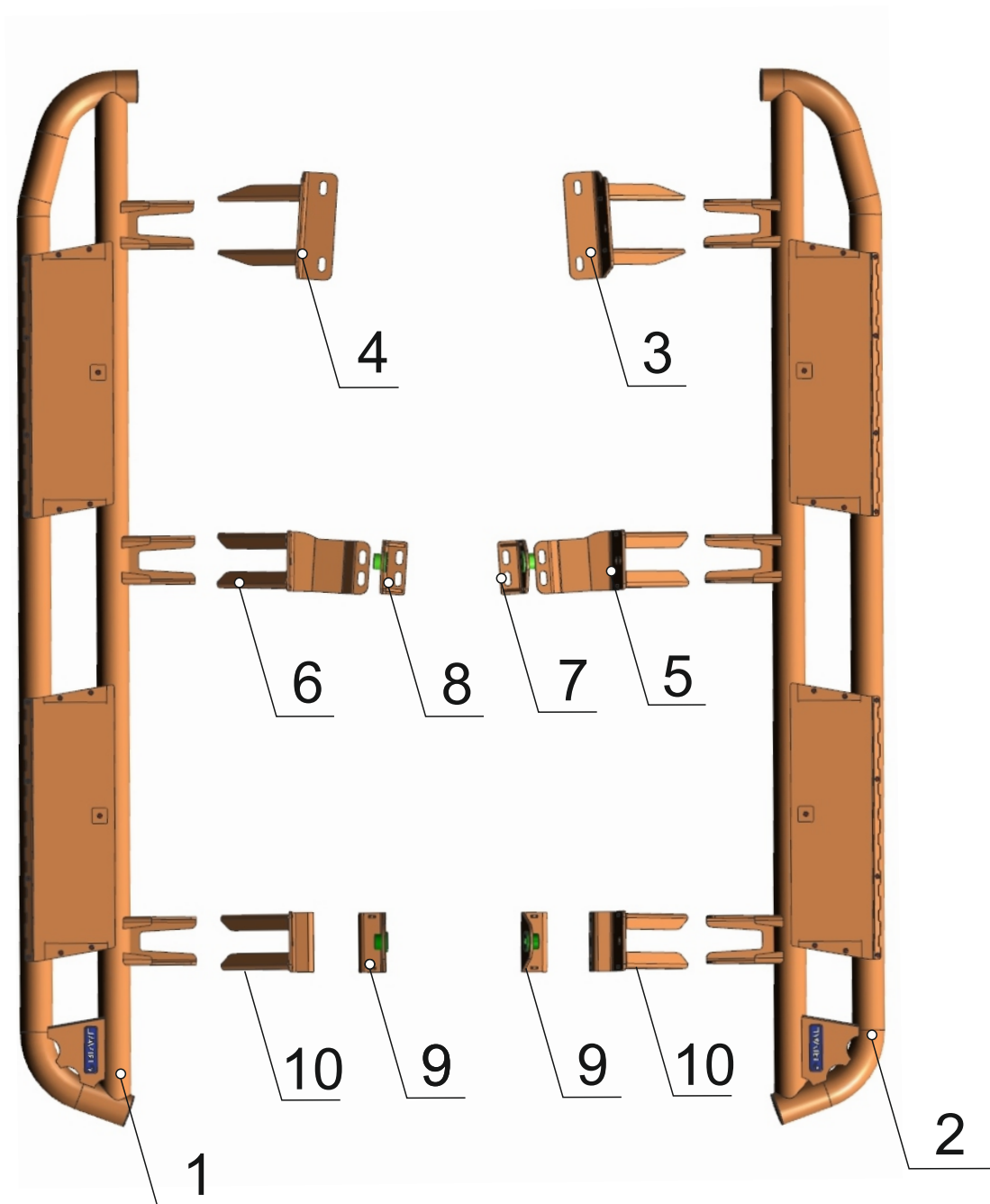
REQUIRED TOOLS

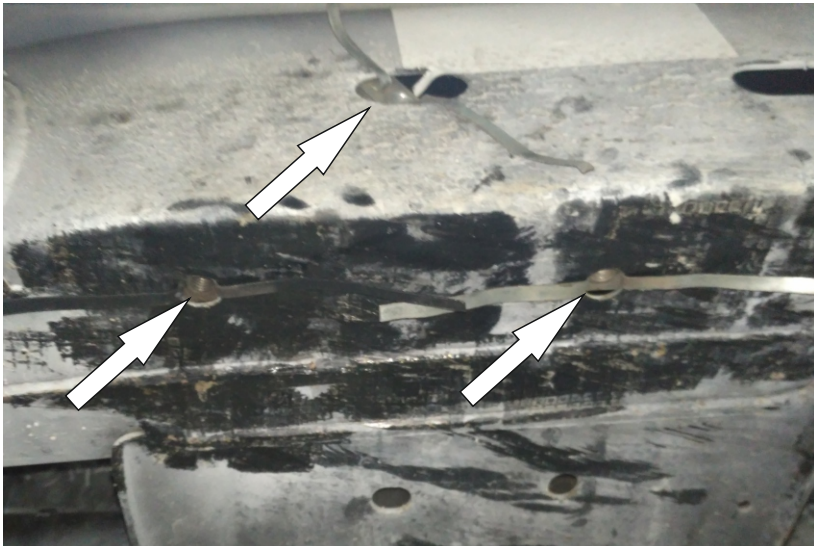
- * Basic tool kit

TORQUE SETTINGS

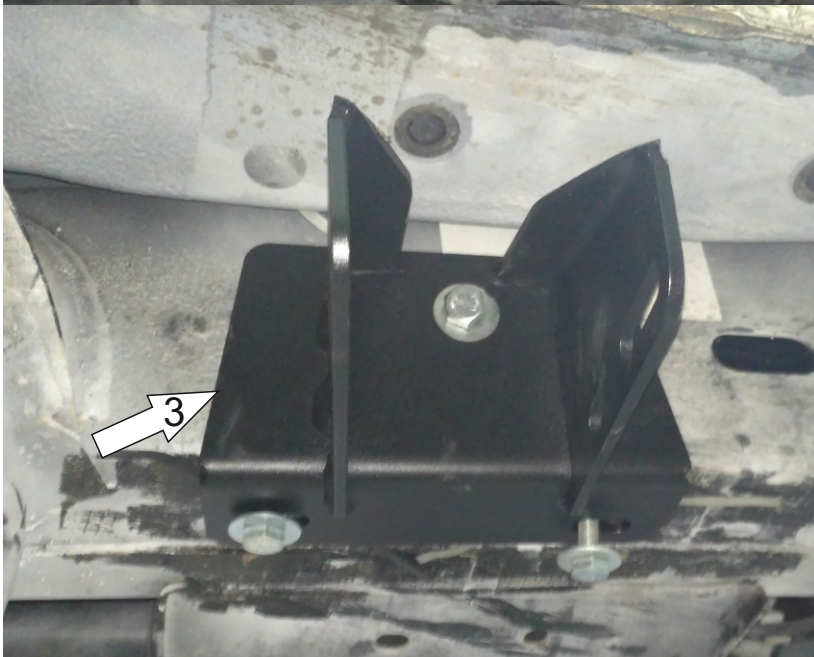
- * M10 - 44 Nm
- * M12 - 77 Nm

1. Left step.....	1 pc.	12. Bolt M12x120.....	4 pc.
2. Right step.....	1 pc.	13. Bolt M12x30.....	40 pc.
3. Right front bracket.....	1 pc.	14. Bolt M10x30.....	6 pc.
4. Left front bracket.....	1 pc.	15. Nut M12.....	40 pc.
5. Outer center right bracket.....	1 pc.	16. Washer 10.....	6 pc.
6. Outer center left bracket.....	1 pc.	17. Washer 12.....	84 pc.
7. Inner center right bracket.....	1 pc.		
8. Inner center left bracket.....	1 pc.		
9. Inner rear bracket.....	2 pc.		
10. Outer rear bracket.....	2 pc.		
11. Insert nut with wires.....	6 pc.		



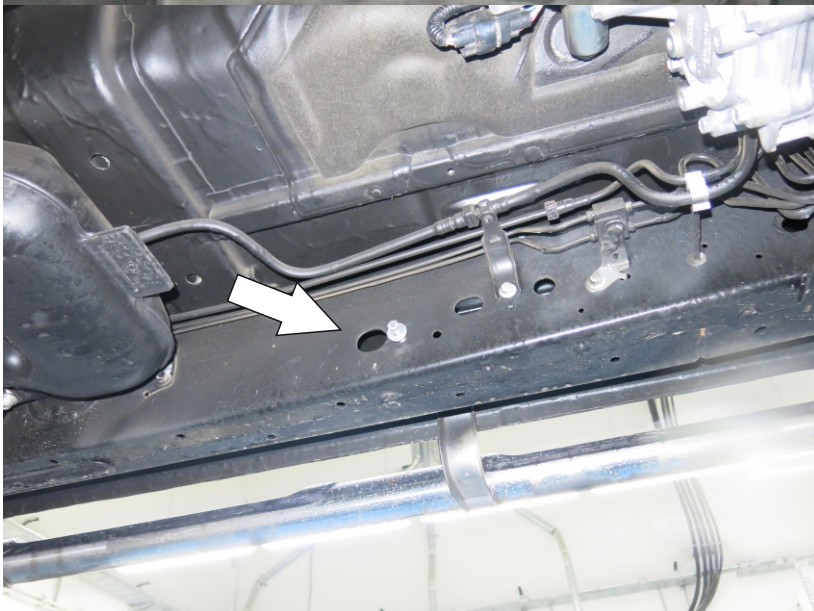


1. Place insert nuts with wires in front part of the chassis near the cross-bar.



2. Mount front brackets (3) (4) to placed insert nuts using bolts M10x30 and washers 10.

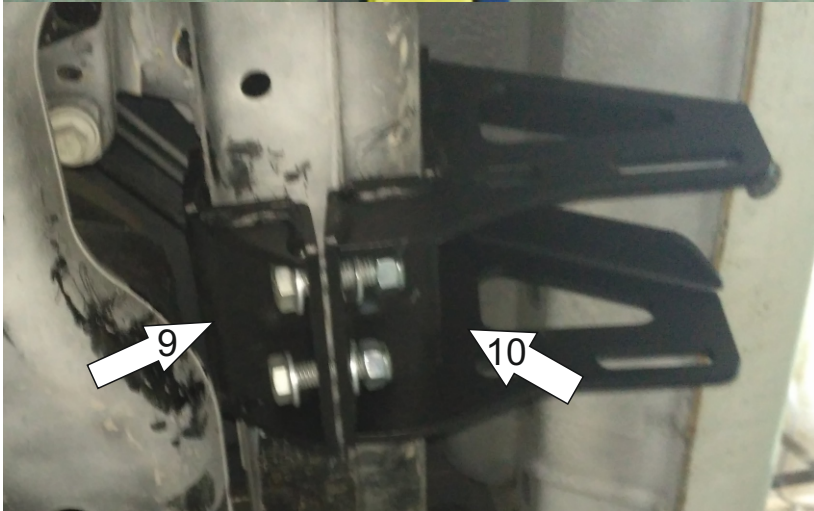
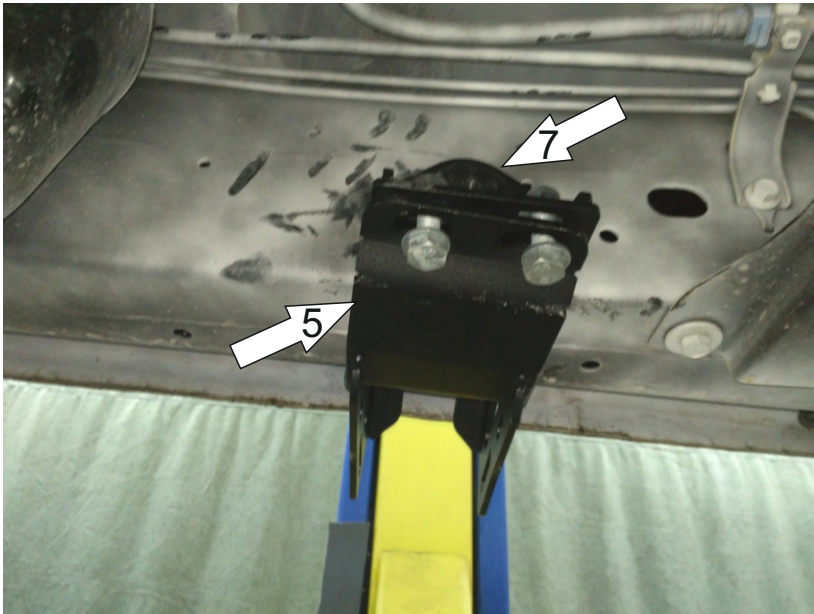
Do not tighten yet.



3. Place spacers into the chassis and mount brackets (7) (8).

Mount outer center brackets (5) (6), fix them with inner brackets using bolt M12x120, bolts M12x30, nuts M12, washers 12.

Do not tighten yet.



4. Place threaded spacers into the chassis. Mount inner rear brackets (9).

Mount outer rear brackets (10). Fix them to inner brackets using bolts M2x120, bolts M12x30, nuts M12, washers 12.

Do not tighten yet.

5. Mount steps to the brackets. Fix them using bolts M12x30, nuts M12, washers 12.

6. Tighten brackets to the chassis.

7. Tighten steps to brackets.

Before operating a vehicle fitted with a RIVAL side step bars, make sure all fittings are tightened

